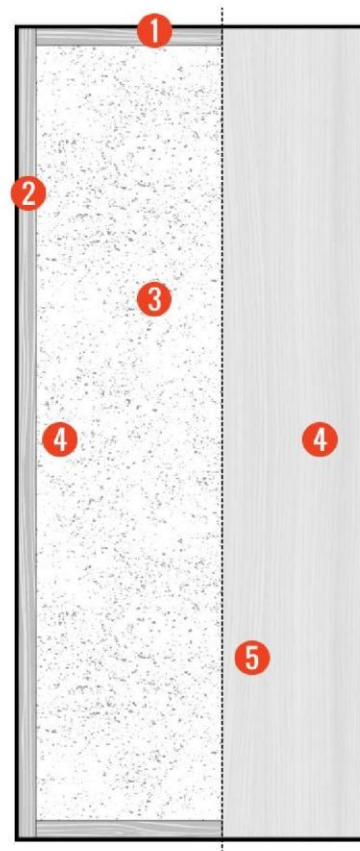
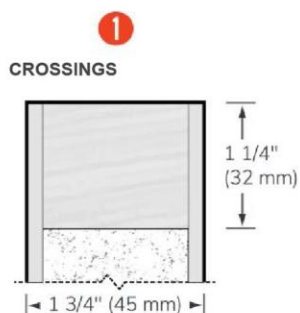


- 1 cross member of 1 1/4" (32 mm)**
clear finger-jointed pine or equivalent
- 2 1 3/4" (45 mm) leaves**
of LSL type including 7/8" (22 mm) of hardwood matching the face
- 3 "Agrifibre" type cores**
- 4 Integrated reinforcement**
- 5. Faced with the**
choice between rigid panels or wood veneer (see descriptive sheet)



Note that all dimensions are raw.

Type 1 adhesive, waterproof
Urea-free, formaldehyde-free

Fire resistance 45 min.
Included

Lifetime warranty

*** To maintain the warranty and comply with fire-resistance standards, pre-machining must be carried out by Porte Saint Michel or an authorized distributor.**

**** Some applications will require additional blocking in specific locations.**

Eligible credits

To obtain the credits, specify "PUSM Eco Series"

LEED Canada - NC 2009

M.R.						Q.E.I			I.D.	P.R.
3	4	5	7	5.1	5.2	3.2 op2	4.1	4.4	1.mo1	2
✓	✓	✓	✓			✓	✓	✓	✓	✓

LEED Canada - C1 (v1.0)

M.R.							Q.E.I			I.D.	
3.1	3.2	4.1	4.2	5.1	5.2	7	3.2 opB	4.1	4.4	1.1	1.2
✓	✓	✓	✓	✓	✓	✓	✓	✓	✓	✓	✓